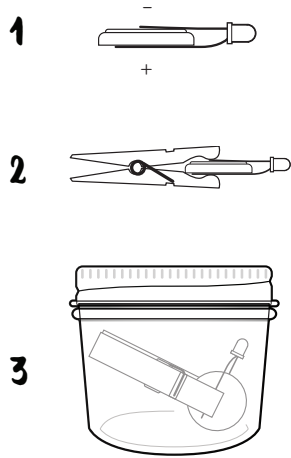


## INSTRUCTIONS



- 1 Place your battery between the two metal legs of the LED. Make sure the longer leg is touching the flat side marked with the '+' sign. Your LED should begin to flash.
- 2 Use your clothespin to hold the LED and battery together.
- 3 Carefully place your firefly into your jar.
- 4 Add some leaves and twigs to make your firefly feel at home. You can glue them to the clothespin to make it less visible.
- 5 Disconnect your firefly when you're not around to make the battery last longer.